

The Sketch Pad

Holiday Greetings
and Wishes for a
Happy New Year!

The Newburyport Art Association Member Newsletter • www.newburyportart.org • Nov./Dec. 2002

To the Membership:

Since my term as President ends at the close of this year, I want to review briefly what we (a very large number of people) have accomplished. We started the year with two weeks of construction and painting - the stairs, the locked storage room and racks for works that needed to be stored, closing the entrance to the library in the studio and opening one to it in the hallway, converting the racks in the hallway to supplies storage, painting the studio and gallery. We also undertook clearing our attic and basement of years of accumulated "stuff" that filled two dumpsters.

The next big project was the preparation for our first auction - the meetings, the recruitment of people to help run the auction, the dozens of procedures and details of the preparation, the clearing of tree branches overhanging our rear fence so that the tent for the auction could be set up, the building of a railing on our back steps, the auction itself.

The Laura Coombs Hills annex was the next item on which we focused - meetings with the architect, the developer, lawyer, engineers, electricians, carpenters, plumbers, etc. Then the actual construction, which required continual contact with what was going on until the completion.

While the annex was being built we had the main building undergoing the installation of an extensive sprinkler system, new

electrical wiring, a hard-wired fire alarm system, a security system involving motion detectors and a camera monitoring system.

I won't recount all the glitches and changes and the flooding of the basement. However, we now have just about everything in place and up and running. It's worth noting that all year while all this was happening, we were operating "normally" - having our exhibits, workshops, classes, readings, and meetings. We also made major improvements in office procedures, programs and computerization during this time.

I'll end by saying that I doubt whether any non-profit volunteer organization could exceed what we have achieved in the past year. I feel a tremendous sense of satisfaction and pride, as do, I'm sure, the officers, board, staff and membership, over having been part of this undertaking. Last, and certainly not least, without the generosity of our donors, and the joint partnership with David Hall, none of this would have been possible.

From all of the above it may not seem like fun to have been President this past year, but I assure you it was. I was given the opportunity to help develop something that has occupied my time and interest for many years. I hope to be able to continue doing so in any capacity.

-Al Moskowitz

NAA Officers and Board Elections

At our annual membership meeting, October 11, 2002, the following members were elected (Note: The Board members have staggered terms of office. Therefore, not the entire Board was elected at this time. Included below are incumbent members who were not up for election):

Pres.- vacant

Vice Pres. - Bob Currier

Treas. - Skip Motes

Sec'y - Marge Recke

Board Members:

Carole Beckwith, Kerry Callahan, Carol Hershey, Vicki Hutcheson, Jay McGovern, Al Moskowitz, Warren Moskowitz, Marge Motes,

Helen Powell, Robert Pyle, John Raleigh, David Saums, Susan Spellman, Lowell Widmer, Lydia Widmer

2002 Annual Giving to Support NAA

Please join in this year's Annual Giving to provide important financial support to the Newburyport Art Association's ongoing mission of education, exhibitions and advocacy in the visual arts. Thanks to the outstanding support from members, friends and area businesses and institutions, the Association has grown tremendously in the programs we offer. You will receive a letter soon from NAA: take a moment to review our accomplishments and plans, and consider making a generous, tax-deductible contribution.

2002 Fall Juried Show

Caroline Bagenal, Judge, Assistant Professor, Montserrat College of Art
Judge's Overall Comments on the Show:
"I was very impressed with the quality of the work in this show. Landscape was the most popular theme and I was excited to see such a variety of approaches to that perennial subject. I looked for work that was fresh and direct and I found plenty."

Awards

- * Mary Alice Arakelian Memorial Prize for Best of Show \$125 **Susan Brailey**, "Corfu Street", watercolor
- * H. Patterson Hale, Jr. Memorial Prize for Excellence, \$75 **Irina Okula**, "Saggar Fire", clay
- * Institution for Savings Charitable Foundation Prize for General Excellence in Painting, \$50 **J.J. Carroll**, "Across the Hudson", acrylic
- * Laura Coombs Hills Award for General Excellence in Water-based Media, \$50 **Mary Rogers**, "Joyful Sound", watercolor
- * Sam Sargent Award for General Excellence in Pastel, \$50 **Cindi Deimantas**, "Night Mirrors", pastel
- * Newburyport Bank Award for General Excellence in Mixed Media/Pastel/Drawing/Printmaking \$50 **Joan Hancock**, "Low Tide at Gray's Beach", pastel
- * Honorable Mentions, \$25
Marie Crone, "Maudslay Morning", watercolor
Susan Kneeland, "Portrait of Georgia O'Keefe", oil
Joan Bediz, "The Slow Season", pastel
Debra Corbett, "Late Day, Stonington", oil

With Regret...

Unfortunately, our planned costume ball and dinner for November 23 must be postponed until sometime next year. While the Phoenix Room was given to us through the generosity of Ann Lagasse, the cost of the catering, which is tied to the Room, was too great for our undertaking. So, we will try again next year to find a suitable place where we are able to keep the costs in an affordable range.

Corporate Donors

Corporate Patron

Mary Alice Arakelian Foundation

Corporate Benefactors

H. Paterson Hale, Jr. Charitable Foundation
Institution for Savings Charitable Foundation

Corporate Sponsors

Newburyport Five Cents Savings Bank
Newburyport Civic League
MAST Industries, Inc
IBM Corporation
Downey Shea, Rowley Ready Mix, Inc. (inkind)

Corporate Donors

Edward G. Molin Charitable Foundation
Robert Currier, Municipal Advisory Services, Osram Sylvania (in kind)

Business Partners

Leary's Fine Wines and Spirits
ZIP Type Service (in kind)
Mark Brophy (in kind)
First and Ocean National Bank
Ron Garand, Newbury Engineering
Annie's
Gilman Studios
Drs. Griffel and Doben
Fisler Communications
Linda A. Miller, Architect
Newburyport Press, Inc.
O'Flaherty Law Offices
Pressmasters, Inc.
Strem Chemicals, Inc.
Woodman Associates
Walsingham Gallery

Thank You!

Photography Interest Group

The September 9 meeting of PHIG included a review of the annual photo show, show awards, price points and questions about reducing the number of photos in the show from 115 to 70 or 80. The show was good but overwhelming, especially double hung downstairs. A request was made to also use the Hills Gallery, if possible, for the photo show. Members of the group were asked to cast their vote by contacting Helen at hpowell@iopener.com. The meeting of PHIG on October 14 included a critique session similar to the September meeting, when Bob Currier solicited opinions about a current b/w figure-study project. The next meetings will be on Nov.11 and Dec. 9

Ongoing NAA

Interest Groups & Workshops

Interest Groups

No pre-registration required. Contact information below.

Abstract and Experimental Painters

2nd Tues. of the month, 7-9 p.m.
Contact: Sharyn Dahn, 978-465-6310

Photography Interest Group

2nd Mon. of the month, 7:15 p.m.-9 p.m.
Contact: Helen Powell, 978-465-1535, email: hpowell@iopener.net

Powow River Poets

Selected Wednesdays, 7:30-9 p.m. (See NAA Calendar) Contact: Rhina Espaillat, 978-462-9144, email: espmosk@juno.com

Poetry Soup

(for High School students)
First Thursday of the month, 7 p.m.
Contact: Debbie Szabo, email: dszabo@massed.net

Plein Air Group

Please see article in this issue on the formation of a second group.

Workshops

No pre-registration required. Contact information below.

Figure Drawing (live model)

Every Wednesday night 7-9:30 p.m. No instruction. Contact Gordon Przybyla, 978-465-5721 Cost: \$6. Per session for members/ \$8 per session non-members.

Sculpture (live model)

Every Thursday night, 7-9:30 p.m. No instruction. On going 6 week session. Contact: Al Moskowitz, 978-462-9144, email: spmosk@juno.com Cost: \$50 for members/ \$55 non-members.

The Sketch Pad

The Sketch Pad is the newsletter of The Newburyport Art Association, Inc., 65 Water Street / PO Box 28 / Newburyport, MA 01950 tel. (978) 465-8769 Web: www.newburyportart.org

2002 NEWBURYPORT ART ASSOCIATION BOARD MEMBERS

Officers

Co-Presidents:	Al Moskowitz	978-462-9144	espmosk@juno.com
	Skip Motes	978-463-3374	skipmotes@attbi.net
Treasurer:	Skip Motes		
Secretary:	Marge Recke	978-465-1292	

Directors

Capital:	Warren Moskowitz	978-356-4310	warren.moskowitz@sylvania.com
Corporate Fund Raising:	Helen Powell	978-465-1535	hpowell@iopener.net
Development:	Jay McGovern	978-465-3536	jaymcg@attbi.net
At Large:	John Raleigh	978-465-3290	jraleigh@attbi.net
	Bob Currier	978-465-1958	rcurrier@aol.com
	David Saums	978-388-0448	dsaums@email.msn.com
Education/Programs:	Susan Spellman	978-465-3536	suespellman@attbi.net
Exhibitions:	Lindley Briggs	978-465-5593	briggs@shore.net
Grants:	Carol Hershey	978-463-3761	carol_s_hershey@aoncons.com

Membership: Marge Motes

NEWBURYPORT ART ASSOCIATION STAFF MEMBERS

Gallery Director:	Elaine Lansky	978-465-8769	naa@newburyportart.org
Gallery Assistant:	Andrea Alukonis	978-465-8769	naa@newburyportart.org
Office Administrator:	Joan Merrill	978-465-8769	naa@newburyportart.org
Promotion and Publicity Manager:	Barbara Mattina	978-465-8769	BobbieAnn@NightStorm.com

Board Meetings will be held the first Tuesday of every month at 7 p.m., unless otherwise announced.

Items for the SketchPad: We prefer electronic text, although handwritten submissions are also accepted. E-mail to: Al Moskowitz: espmosk@juno.com, or mailto: 12 Charron Drive, Newburyport, MA 01950.

Deadline for submissions is 15th of the month for following month's issue.

SketchPad Editor: Al Moskowitz, 978-462-9144 SketchPad Layout: Scott Simmons, 978-463-7826

NAA Mission Statement: The NAA is a community of artists devoted to supporting, encouraging and motivating all artists. Our mission is to provide: Education in the visual arts for both children and adults; In-house and outreach programs to enhance awareness and appreciation of the Arts; Promotion of artists through exhibition and media exposure; Financial security for our historical association and a building which serves as a place for local artists to promote their art in a community setting.

NAA Exhibitions & Gallery Special Events Calendar: 2002-2003

There are three galleries in the Newburyport Art Association's building at 65 Water Street. The Sargent Gallery is the main, first-floor gallery. The second-floor Hartson Gallery is used for exhibitions and classes. The new Laura Coombs Hills Gallery Annex provides an additional first-floor gallery and a new, main entrance to the NAA building that provides handicap accessibility to the first-floor galleries and office.

Gallery hours are Monday through Saturday, 11 a.m. to 5 p.m. and 12 to 5 p.m. on Sunday, unless otherwise noted. Exhibitions and receptions are open and free to the public, as are gallery lectures, poetry readings and interest groups, unless otherwise noted.

NAA MEMBER SHOWS

Tuesday, November 19-Saturday, December 28, 2002.

Holiday Show

(Call for Entries will be mailed separately with all the details.)

ANNUAL HOLIDAY PARTY!

Friday, December 6: 6 - 9 p.m.

Come celebrate the Holiday Show Opening with your artist friends! Drinks provided, but please bring an appetizer.

Receiving: 2-Dimensional Art Only
Friday, November 15: 11 a.m. - 5 p.m.
Saturday, November 16: 11 a.m.-5 p.m. Pre-Registration form for Artisans (Crafts) by mail.
Set-Up Dates: Monday, November 18: 5 - 8 p.m. Tuesday, November 19: 9 a.m. - 11 a.m.

Pick-up dates for ALL WORK:
Saturday, December 28: 12 - 5 p.m.
Sunday, December 29: 12 - 5 p.m.

January 18 - February 16 (Winter schedule: Closed Mondays)

Winter Juried Show, Part I Painting, Watercolor, Pastel, Mixed Media, Fine Crafts

Sargent and Hartson Galleries
Judge: Jennifer Moses, Associate Professor of Art, University of New Hampshire
Receiving: Sunday, January 13, 12 - 4 p.m. Monday, January 14, 10 a.m.- 5 p.m.

Reception: Sunday, January 20, 3 - 5 p.m. Awards at 3:45 p.m.

Pick up work not accepted: Friday, January 18, 11 a.m. - 5 p.m.

Pick up work accepted: Saturday, February 16, 12 - 5 p.m.

February 22 - March 20 Winter Juried Show, Part II

Drawing, Printmaking, Photography, Sculpture
Sargent and Hartson Galleries
Winter Schedule: Closed Mondays
Judges: Christopher Gowell and Sarah Malakoff
Receiving: Sunday, February 17, 12 - 4 p.m.
Monday, February 18, 10 a.m. - 5 p.m.

Reception: Sunday, February 24, 3 - 5 p.m. Awards at 3:45 p.m.

Pick up work not accepted: Friday, February 22, 1 - 5 p.m.

Pick up work accepted: Wednesday, March 20, 12 - 5 p.m.

FEATURED ARTISTS SERIES SHOWS

**October 31 - November 6
Hills Gallery: Audrey Bechler
"Art Themes 2002" - Watercolor paintings**

Reception: Saturday, November 2, 7-9 p.m.
October 31 - November 13
Sargent Gallery: Lindley Briggs & M.J. Benson "Waves" - Sculpture and Photography

Reception: Saturday, November 2, 7-9 p.m.
Extended Hours: Friday, November 8 & Saturday, November 9 until 7 p.m.

**November 7 - November 13
Hills Gallery: Randy Radke
"Tidewater Retrospection" - Black & White Photography**
Reception: Saturday, November 9, 5-7 p.m.

Extended Hours: Open nightly till 7 p.m. except Wednesday, November 13, till 5 p.m.

GALLERY TALKS

Tax Seminar for Artists, Peter Jason Riley, CPA, Wednesday, January 23, at 7:00 p.m. (Snow date: Wed. Jan 30, at 7:00 p.m.).

A Brush With Friends, Jay Williamson, Sunday, Feb. 3 at 3:00 p.m.

Commercial Applications of Sculpture, Jeffrey Briggs, Sunday, March 3, 3:00 p.m.

In-Depth History of Newburyport Photographers, c.1840-1915, Chris Snow, Sunday, March 10 at 3:00 p.m.

POWOW RIVER POETS READINGS

Wednesdays, 7:30 p.m., at the NAA
November 20
December 18
January 16
February 27

**Newburyport H.S Poetry Soup
Thursdays, 7 p.m., at the NAA**
November 7
December 5
January 2
February 6

**CALMValley Meeting is
Tuesday, November 26, 7 p.m.**



KUDOS!

- * **John Applegath** had his first show on a theme, "A Whimsical Eye" at Exeter, New Hampshire Public Library through October 31. While some of his "fine art" work is included, mostly this was a fun show presenting a number of off-beat, sometimes humorous images, unusual shots of very mundane objects, etc. At York, Maine Art Assn, he had two pictures in their Annual Photography Show and one of them, "Yin & Yang," took Second Place. He had several pictures at York's "Art in the Park," at Levy Gallery, Portsmouth, NH (New Hampshire Art Assn) Annual Photography show, at Kittery, Maine Art Assn. One picture "Green Glade," was also in Prescott Park Juried Art Show, Portsmouth in July & August. My web page is at www.newburyportart.org - click on Artist Portfolios, Traditional Photography.
- * **Joan Biasucci, Elaine Bravos Geist**, "Artworks: Fibers and Paintings" Bravos Art Gallery, Georgetown, MA November 14, 15,16, and 21, 22, 23 Reception: Saturday, November 16, 4 - 6 p.m. Phone: 978-352-8102
- * **Bill Franson** was recently awarded first place for one of the images from his international adoption series by Karen Sinsheimer, curator of Photography at the Santa Barbara Museum, in the Texas Photographic Societies 11th

National Competition. Three other images from the series are included in the exhibit, which opened in September during Austin's annual PHOTOSynthesis event. The exhibit will travel the state of Texas for a year.

- * **Pamela Giarratana** is featured in an article in the December issue of American Artist Magazine, called "Painting in the Zone". Four of her paintings, two of which have been exhibited at NAA, are reproduced in the article.
- * **Charlotte Huebner** is exhibiting her work in a show entitled, "5 Sisters in Art", with four other artists at the Lawrence Heritage State Park Museum, 1 Jackson St., Lawrence, Nov. 3 - 30. Opening reception, Nov. 3, 1-4 p.m.
- * **Elaine Inero** participated in the following exhibits and fundraisers during the year 2002: "Intricate Layers" Attleboro Museum, Essex County Greenbelt fundraiser, Essex Art Center Art Auction and Essex Art fundraiser, American Print Alliance Sept. 11 Memorial Portfolio (a travelling exhibit). And last but not least, Art for Hope - Art Auction and Benefit for IBC Research, Boston Harbor Hotel.
- * **Darlene Ouellette** has a solo exhibition of 32 oil paintings, on the "Many Moods of Summer". The show goes from Sept. 20th-Dec.4th., M-F, 8-5 Hoefle, Phoenix, Gormley, P.A., 402 State Street, Portsmouth, NH 03801 603 436-0666, (Across from the Rockingham, and Library Restaurant)

- * **Dennis Poirier** recently won the Gorton's Award, which is the Best in the Show at Exhibition III, the final show at the North Shore Arts Association. It was a Sept. 11th Remembrance Show and was up through October.
- * **Robert Pyle** will have an exhibit at the Fine Arts Gallery at the Italian American Cultural Center, 28 Mulberry St., Worcester, MA, from December 4 to December 30, 2002. The opening reception will be held on Wednesday, December 4, from 7:00 to 9:00 p.m. "A Sense of Italy" is his first major exhibition focusing on Italy. It is the culmination of his many visits to Italy with his large format view camera. These photographs, taken over the past decade, capture the beauty and reveal the spirit of Italy and provide the viewer with the unique visual pleasure of the large format fine art black and white print. The featured photographs of Venice, Tuscany, Assisi, and Ostia Antica, the ancient coastal port of Rome, highlight the unique Italian architecture of the Renaissance and Roman times and the quiet, evocative Italian countryside. A preview of this work and his other photographs is available at RobertPyle.com

If you have any news about your awards or exhibits that you want in this column, please send it to Al Moskowitz, espmosk@juno.com, or to the NAA gallery.

NAA Guest Poet May Be Named Head of the NEA

From the 10/23/02 edition of the New York Times: "The poet, critic and anthologist Dana Gioia has emerged as the leading candidate to become the next chairman of the National Endowment for the Arts." Dana Gioia presented a special reading sponsored by the Powow River Poets at the NAA in November of last year.

Studio Space Available

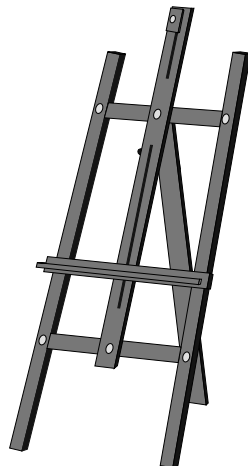
If you are interested in leasing studio space in the basement under the Laura Coombs Hills Annex, contact David Hall at Hall & Moskow, 978-465-7047, X23.

Sculpture Group Anyone?

There has been interest in forming a Sculpture Group. Members who want to participate in such a group and/or would like to help lead it, please contact Al Moskowitz, 978 462-9144 or espmosk@juno.com.

Formation of Second Plein Air Group

Because of the large number of members who have been participating in the Plein Air Group, it has become necessary to form a second Group to accommodate everyone. Artists who are interested in forming this second Plein Air Group should come to NAA on Saturday, December 7, at 1 p.m. At that time the artists can discuss when they would like to gather for Plein Air painting and select a coordinator.



Your Single Source for:

Graphic Design Illustration
Photography
Print Production & Brokerage

Newburyport, MA

978-465-9471

raleighdesign@attbi.com

2003 NAA Membership & Dues

Membership

All current and lapsed NAA members will be receiving the 2003 dues bills in December. Those who are currently 2003 members will also receive a copy of their membership form, which will need to be looked over and returned. Please note any changes on your membership form - read it carefully and return the WHOLE form to NAA by mail or drop it off at the office. Make all necessary changes to your address, phone number, email, media, volunteer activities, etc. on the form you will be receiving.

2003 is going to be an exciting year, with new shows, Featured Artist Exhibits and lectures and interest group programs and educational opportunities. Be sure to read your Call for Entries carefully so that you are up to date on when to enter the shows during the year. You will be receiving a first quarter calendar in your NAA billing.

The SketchPad is on the NAA website and can be read there if you lose your hard copy. All Show Call for Entries and Educational activities at NAA will be mailed separately to all NAA members.

NAA is excited about all of the wonderful classes which Montserrat College of Art is now giving at NAA - be sure to keep up-to-date on what is going on and take advantage of these classes. Note: If you were an NAA member in 2001 and a lapsed member during 2002, you still received the NAA Call for Entries and the newsletter. Due to the increase in the cost

of mailing, NAA will be removing those 2001 lapsed members from the mailing list. We hope that those who have been lapsed will rejoin or become a Friend of NAA continuing to support the arts in the region.

2003 Dues Bills

The 2003 Dues bills will be sent out in early December to all members whose membership ends in 2002. When you receive your form be sure to update all information and return the WHOLE form to NAA in the envelope which is enclosed. There are changes to the membership forms, website and links, so read your information carefully. You may also pay your dues at receiving. If you do, be sure to bring your WHOLE membership form with you so it can be put in the file.

NAA's new membership chairs will be Lowell and Lydia Widmer. They are a great team and will be a wonderful asset to NAA's board.

Exhibitions are already planned for 2003 and it looks like another exciting year ahead. Be sure to watch for your Call for Entries and dates for receiving. I have enjoyed working with everyone these past 2 years as membership chair. The new ACT program has been a great asset to the exhibition team and I look forward to seeing you all around NAA next year.

-Marge Motes, Membership Chair

Abstract Artists Group Show

The Abstract Artists Group (AAG), is proud to announce that its first show was an outstanding success. Fifty pieces of abstract work created by 18 artists were exhibited September 19-25 in the Sargent Gallery. On exhibit were paintings in oil, acrylic, watercolor and mixed media, sculpture done in wood and clay, prints, collage, textile designs and digital paintings. A book of the artists' statements, along with descriptions of their work and quotations defining abstraction, surrounded the room to help the viewers better understand the artwork. The color and design of each piece generated much interest, along with great comments such as "Par excellence!" "Great Show!" "Best I've seen... do more."

Attendance and spirits were high throughout the Opening, which coincided with the annual Newburyport Gallery Walk. Special thanks to Sharyn Dahn for a tremendous job organizing all aspects of the show, as well as providing ongoing motivation for the growth of the Abstract Artists Group. Edith Heyck's collage, "Purple Passion" was voted the Viewer's Favorite of Show. However, it must be noted that there is some question as to whether working as bartender and threatening to withhold drinks, is a valid method of gaining votes!

The AAG is planning another show for 2003 and is open to new members. The meetings are on the second Tuesday of the month: Nov. 12, Critique, March 11, Critique, April 8, Critique, May 13 Speaker /Demo, Sept. 9. Meetings are held at NAA, 7-9 pm. For further information call Elaine Inero, 978-372-4598, Andrea Alukonis 978-255-1263 or email Sharyn Dahn at sdahn@earthlink.net.



NEWBURYPORT
ART SUPPLIES
and **FRAMING**

Fine Art Supplies for
Professionals and Students

Custom Framing

3 Graf Rd. Newburyport, MA 01950
978-462-0773





NEWBURYPORT ART ASSOCIATION, INC.

65 Water Street / P.O. Box 28
Newburyport, MA 01950

Return Address Requested

Dated Material — November 2002

**NON-PROFIT ORG
US POSTAGE PAID
NEWBURYPORT MA
01950
PERMIT NO 176**

Upcoming Shows & Events:

Holiday Show

ANNUAL HOLIDAY PARTY!

Friday, December 6: 6 - 9 p.m.

Come celebrate the Holiday Show Opening
with your artist friends!

Drinks provided, but please bring
an appetizer.

Receiving: 2-Dimensional Art Only

Friday, November 15: 11 a.m. - 5 p.m.

Saturday, November 16: 11 a.m.-5 p.m.

Pre-Registration form for
Artisans (Crafts) by mail.

NAA is a non-profit organization.

Help Needed in the NAA Library

Needed: a couple of helpers (short term project) to sort books, color code by subject and reshelve. NAA has received many wonderful used art books which need to be sorted and reshelve. After they are reshelve the books will be indexed. Call the office and leave your name with the office staff, so that Marge Motes can give you a call.

SketchPad Deadline

If you have an item for the SketchPad, please remember that the deadline is the 15th of the month prior to publication. Also, if possible, send it by e-mail so that it needn't be retyped and your information will get printed accurately.

The Source:

www.newburyportart.org

Members are reminded that they can access information about exhibits, the NAA calendar, classes and workshops, photos of works and information about individual member artists, poetry readings, etc.

Just click on www.newburyportart.org to be informed.

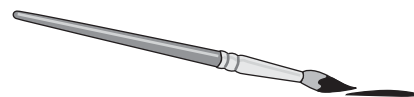
Tom Ryan in The Undertoad says:

"Something is telling us that the Firehouse needs to learn from the fine job Skip and Marge Motes and the non-controversial but successful board of directors at the Newburyport Art Association is doing. They do wonders with what they've got and they make it work. It is a classy organization and we don't know of the last time any controversy was connected with the N.A.A."

Sketch Pad Advertising Rates

For a 2"x3 1/2" ad, camera ready, for 3 issues (6 months), the rate is \$50. Electronic files are also accepted.

Please contact scott@loremipsum.com for more information.



Accurate Reproductions

of Your Artwork

Slides, 4 x 5's

Digital Files

Color and BW Prints



Gail Handelmann 781-631-0573

Ask about prints on watercolor paper