



Newburyport Art Association, Inc.  
65 Water Street  
Newburyport, MA 01950

NAA is a non-profit organization.

Dated Material September 2005

NON-PROFIT ORG  
US POSTAGE  
**PAID**  
NEWBURYPORT MA  
01950  
PERMIT NO 176

**JOANNA HAMMOND**  
Broker Associate



28 Green Street Newburyport, MA 01950  
Office: (978) 462-8155  
E-MAIL: [jhammond@carlsonre.com](mailto:jhammond@carlsonre.com)

*"Let me put my creative thinking to work for you"*

# The Sketch Pad

Newburyport Art Association Member Newsletter    [www.newburyportart.org](http://www.newburyportart.org)    September/October 2005

## The World of Make Believe Show 2005



A Non Juried Show  
of NAA Members  
Celebrating Imagination  
During this Halloween Season

**October 28-November 13th**

**Costume Party Reception:**

**Saturday, October 29th, 7-9 P M**

Magical Places, Kaleidoscope of Colors, Bouquets of Whimsy, Fanciful Forms, Tall Tales in all media. Join in the fun, creativity and imagination of NAA's first ever Make Believe Show. Watch the Sketchpad for more information or visit our website; [www.newburyportart.org](http://www.newburyportart.org)

## THE NAA COFFEE CLUB

Beginning September 19th, from 9:30am -11:00am, The Newburyport Art Association will host the first meeting of the NAA Coffee Club.

We will meet on the 1st and 3rd Monday of each month for a very informal critiquing session intended to encourage NAA members to get to know each other.

Drop in and have some coffee, meet other artists...network... present a work for critiquing. Please contact the gallery at 978.465.8769 if you would like to be the facilitator of this new social activity.



## New! NAA Artist Demo Series:



JC Airoidi's July Artist Demo

Charlotte Wharton

Landscape Demo in Oil

Tuesday, September 27, 7- 9pm  
Charlotte Wharton is well known for her portraits, floralscapes & landscapes in oil and pastel. Her work is in many private and corporate collections across the US and Europe.

*Admission is free/Donations appreciated*

## En Plein Air or Wannabes

Friday,  
September 23, 7pm



All interested artists are invited to come and share: Established groups that paint together on location will have the opportunity to swap location tips and talk about recent painting excursions. Artists who would like to paint outdoors but don't want to go out alone, will be able to connect with other artists, get information and support to establish their own groups.

## ARTWORK PICK-UP

Artists please pick-up your artwork on the pick-up date for each show. Those with special circumstances are asked to kindly notify the gallery in advance. The NAA policy states that each artist bears all responsibility for loss of, or damage to, work not picked up by the scheduled pick up date.

Due to insufficient storage space, all artwork left 30 days or more beyond the scheduled pickup date of a show will become the property of NAA and will be sold in the annual auction.

**Thank you for your cooperation, please note that this policy will now be strictly enforced.**

## The Sketch Pad

The Sketch Pad is the newsletter of The Newburyport Art Association, Inc. 65 Water Street Newburyport, MA 01950 [www.newburyportart.org](http://www.newburyportart.org) Tel. (978) 465-8769 Email: [naa@newburyportart.org](mailto:naa@newburyportart.org)

### NAA Board of Directors

#### Officers

Co-President: Mindy Moore  
Co-President: Helen Powell  
Vice President: Bob Currier  
Treasurer: Skip Motes  
Secretary: Susan Jaworski-Stranc

#### Directors

Al Moskowitz Joe Ferlazzo  
Patty St. John John Raleigh  
Bob Pyle Harry Taplin  
Monica Welsh Susan Spellman

### NAA Staff Members

Gallery Operations: Carol Reynolds  
Business Manager: Joan Merrill  
Staff Associate: Amy Conly  
Gallery Associate: Andrea Alukonis  
Gallery Associate: Lee Fortmiller  
Gallery Associate: Sue Ann Pearson

Board Meetings are held the first Tuesday of every month at 7 p.m., unless otherwise announced.

Submissions to the Sketch Pad Email is preferred to: [naa@newburyportart.org](mailto:naa@newburyportart.org). Mail handwritten or typed submissions to: NAA: 65 Water Street, Newburyport, MA 01950. Deadline for submissions is the 15th of the month, for the following month's issue.

**NAA Mission Statement** The NAA is a community of artists devoted to supporting, encouraging and motivating all artists. Our mission is to provide: Education in the visual arts for both children and adults; In-house and outreach programs to enhance awareness and appreciation of the Arts; Promotion of artists through exhibition and media exposure; Financial security for our historical association and a building which serves as a place for local artists to promote their art in a community setting.

## Member News

Pearl Racette has moved to Littleton, Colorado to be with her daughter. She's hoping to do some freelance work as well as hold photography workshops before moving to Arizona as a permanent resident. She hopes to divide her time between Colorado and New England teaching workshops, so hopefully we'll see her next Summer. Best of luck Pearl!



### The NAA 50th Anniversary Cookbook is for sale in the gift shop, it makes a great house gift...

#### **Lemon Torte**

##### **from 1971 cookbook**

4 eggs  
1/4 tsp. cream of tartar  
1 C sugar  
1 C cream, whipped  
4 egg yolks  
3/4 C sugar  
3 Tbsp. lemon juice  
2 tsp. lemon rind (grated)



Beat egg whites until frothy. Add cream of tartar and beat until stiff. Gradually beat in 1 c. sugar. Spread in well greased 12" pie pan. Bake 20 minutes at 250 degrees, then 40 minutes at 325 degrees- cool. Custard: Beat egg yolks until thick and lemon colored. Gradually beat in 3/4 c. sugar, add lemon juice and rind. Cook over hot water until thick, stirring constantly. Cool. Spread half of the whipped cream on meringue, add custard and spread rest of whipped cream on top. Refrigerate 24 hours before serving. Serves 8 to 10.

### NEW OFFICE E-MAILS

All financial inquiries to  
[jmerrill@newburyportart.org](mailto:jmerrill@newburyportart.org)

All gallery related inquiries to  
[creynolds@newburyportart.org](mailto:creynolds@newburyportart.org)

All Sketchpad articles and inquiries to  
[aconly@newburyportart.org](mailto:aconly@newburyportart.org)

## NAA Business Partners

Corporate Gold Circle (for gifts of \$25,000+)  
The Mary Alice Arakelian Foundation  
The H. Patterson Hale, Jr. Charitable Foundation

Corporate Silver Circle (for gifts of \$10,000+)  
Institution for Savings Charitable Foundation  
Newburyport Area Industrial Development Corp. (NAID)  
Newburyport Five Cents Savings Bank

Corporate Bronze Circle (for gifts of \$5,000+)  
Downey Shea, Rowley Ready Mix, Inc. (in-kind)  
Hall and Moskow (in-kind)  
IBM Corp.  
Newburyport Civic League

Business Partners: Patron Level (\$1,000+)

The Provident Bank  
The Edward G. Molin Charitable Foundation  
Strem Chemicals, Inc.

Business Partners: Contributing Level (\$250+)  
KeySpan Energy Delivery  
Massachusetts Cultural Council (through the Newburyport Cultural Council)  
Post Road Framers

Business Partners Basic Level  
Annie s  
Carlson GMAC Reality- Joanna Hammond  
Chase & Lunt Insurance Agency  
Churchill Gallery  
Ditto Editions  
Merrimack Place  
Newburyport Press  
O Flaherty Law Offices  
Pressmasters, Inc.  
Raleigh Design  
The Walsingham Gallery  
Valerie s Gallery  
Zip Type Printing Services (in-kind)

Add your business name here!

## Sketch Pad Advertising

For a 2.35 x 3.65 ad, camera ready, for 1 issue (2 months), the rate is \$50. Electronic files are accepted. Please send \$50 payment by check or credit card to the NAA office.

## Kudos!

Photography by **Alan Ward** and Sculpture by **Sarah Ward** will be on Exhibit at Mass. Audubon's Joppa Flats Education Center, One Plum Island Turnpike. Opening Reception: Sunday, October 16, 2:30-4 pm  
Call: 978-462-9998.

**Madeleine P. Hopkins** received a Merit Award for her oil painting, *Village Road* at York Art Association's (YAA) Spring Show in May and a Merit Award for her pastel painting, *River at the Mill* at YAA's Annual Show in June. *Village Road* sold at Maine Women in the Arts Show the following month in Kennebunkport, ME but may be viewed at [www.mphopkinsdesign.com](http://www.mphopkinsdesign.com).

**Robert Motes** of Cornish, Maine has his Stainless steel sculpture, *An Imagined Place*, at Somerby Landing Sculpture Park until July 2006.

Fine art photographer **Jim Fenton** had 4 photos selected for use in the Commonwealth of Massachusetts Executive office of Environmental Affairs, Parker River Watershed 5 year Action Plan.

**Lynne Guimond Findlay** of Merrimack, NH has been selected as a finalist in the 25th Annual Spring Photography Contest, sponsored by Photographer's Forum Magazine and Canon, Inc. According to Glen Serbin, publisher of Photographer's Forum, more than 21,000 entries were received this year from photographers around the world. The finalist group is composed of just the top 5% of entries, as selected by the magazine.

A large, b&w photograph on silk from **Linda Hirsch's** Cuban Series has been accepted into a juried show in Portsmouth, NH; The show is entitled *Art of Piece*. The image, "Tallis and Madonna - Freedom of Faith in Cienfuegos, Cuba" shows a Jewish prayer shawl in the cathedral of Cienfuegos, Cuba. This show marks the Centennial Celebration of The Portsmouth Peace Treaty. Opening Reception is Friday, Aug. 12th, 6-8 pm. The show runs through Sept. 6th.

**Jay McCarthy** has 2 images juried into the Nature Conservancy's show which is showing at the Public Reading Room of the Boston Public Library through August 31, 2005. The images can be seen on my home page: [www.followthegleam.com](http://www.followthegleam.com)

## F • Y • I

### Ogunquit Museum of American Art - Ogunquit, Maine

July 1- October 15, 2005:

Edward Hopper: The Ogunquit Paintings

August 29 through October 15, 2005:

Memories of World War II:

Photographs from the Associated Press Archives

### Addison Gallery of Art, Andover, MA

September 6 - December 4, 2005

Chuck Close Prints:

Process and Collaboration

September 6 - December 31, 2005

Unfamiliar Territory:

Photographs by Oscar Palacio

September 6 - October 16, 2005

Eye on the Collection:

West to Hopper

## Photography Interest Group



At the July meeting of the NAA's Photography Interest Group, Karl Kastorf of

Post Road Framers in Rowley was the featured guest speaker. To quote Karl: Artists who display their work for show and sales face the high cost of custom framing. Yet, in today's consumer society, the buyer expects that exceptionally fine work be exceptionally well presented, or they will not buy. He brought along several examples of framed photographs and how different and pleasing to the eye each was, depending on the framing and matting choice.

Karl stated that many times he finds that customers will come to him to have a photograph re-framed and matted after they had purchased the photo from a local gallery. In those instances, the photo had been framed and matted using simple black frames with a white mat.

The dilemma for photographers is trying to achieve a balance between showing work in a juried show in which standard framing and matting is one of simplicity as opposed to what the public wants.

Karl and Post Road Framers have a discount program for artists that can reduce the cost of Framing-to-Show by 42%. NAA members can contact Karl at 978-948-2710 to learn more.

The next group meeting is scheduled for Monday, August 8th, at 7:15 PM at the gallery on Water Street.

# 2005 ANNUAL PHOTOGRAPHY & SCULPTURE JURIED SHOW WINNERS

**Juror:** Leslie K. Brown serves as Curator of the Photographic Resource Center at Boston University—a non-profit gallery, library, & resource center devoted to the New England photographic community. At the PRC, she has curated numerous exhibitions, including the recent Contemporary Vernacular. Brown received her M.A. in Art History from the Univ. of Texas, Austin, specializing in Modernism & the History of Photography. Prior to Boston, Brown worked at the Cheekwood Museum of Art, Nashville, TN, the Austin Museum of Art, and the University of Texas at Austin's Blanton Museum of Art. Brown is a public speaker. Brown also teaches at the Art Institute of Boston at Lesley University's photography dept. and as a juror and reviewer for many organizations. [www.prcboston.org](http://www.prcboston.org).

## Juror's Overall Comments

Jurying exhibitions is an immense pleasure for me. Akin to going to a party where at first you don't know anyone, the process is one of finding your way and being introduced to new friends and ideas. Those selected for this exhibition—as well as all who entered—ought to be commended. The work at the NAA is strong and well-crafted. I was introduced to exciting visuals and a thought-provoking series. Perhaps, as the works are hung, new conversations among the pieces will ensue and contribute to a harmonious environment. I'd like to thank the NAA for inviting me into this wonderful community. Also, special thanks go out to the organizers, the board, the amazing volunteers, and everyone who shared their work and vision.

Leslie K. Brown, Curator, Photographic Resource Center at BU



**Mary Alice Arakelian Award for Photography**  
Kate Cameron, Hathorne, MA  
*Lad #1*  
Color Photograph



**Award for Excellence**  
Lisa Victoria, Merrimac, MA  
*Serpentine Fish Head*  
Clay Sculpture



**H. Patterson Hale Jr. Memorial Prize For Sculpture**  
Yildiz Grodowski, Salem, NH  
*Time Traveler*  
Pit Fired Clay



**Honorable Mention**  
Lisa Pelletier, Rowley, MA  
*Insomnia*  
B & W Photograph



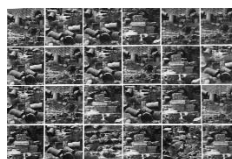
**Institution for Savings Charitable Foundation Prize**  
Thomas Robinson-Cox, Gloucester, MA  
*Meditation*  
Digital Photo, Archival Ink Print



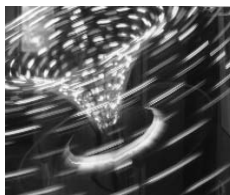
**Honorable Mention**  
William Tangorra, Newburyport, MA  
*Country Drive*  
Digital Photograph



**Newburyport Five Cents Savings Bank Award**  
Terry Weddleton, Portsmouth, NH  
*Manzanar- Japanese Internment Camp Memorial*  
Photograph



**Honorable Mention**  
John Tilney, Concord, MA  
*Rocks*  
B & W Photograph



**Newburyport Area Industrial Development Foundation Award**  
David Whitney, Andover, MA  
*Carnival*  
Digital Photography/Ink Jet



**Honorable Mention**  
Paul Wainwright, Atkinson, NH  
*Fern*  
Selenium Toned Silver Print



**NAA's Regular Hours:**  
**Monday - Saturday**  
**11 AM - 5 PM**  
**Sundays 12 Noon - 5 PM**

**NAA Shows**

8th Annual Members Juried  
Photography & Sculpture Show  
August 19 -September 18  
Pick up work accepted: Sunday,  
September 18, 1-4 pm OR  
Monday, September 19, 11-5 pm

2005 Members Fall Juried Show  
September 23 - October 23

Juror: TBA

Receiving: Monday, September 19,  
11am - 7 pm

Bin work accepted/Up to 10 pieces

Jurying: Tuesday, September 20

Installation: September 21 & 22

Show opens: Friday, September 23

Pick-up work not accepted:  
Sept. 23 & 24

Reception: Sat., Sept. 24, 7 - 9 pm

Pick-up work accepted: Sunday,  
October 23, 1 - 4 pm OR

Monday, October 24, 11 - 5 pm

October 7- ArtWalk

Newburyport ArtWalk

5-8pm

Free Refreshments

A World of Make Believe!

Non-juried Members Show

October 28 - November 13

Receiving: Monday, October 24,  
11am - 7pm

Installation: October 25 & 26

Show opens: Friday, Oct. 28

Costume Party Reception:

Saturday, October 29, 7-9 pm

Pick-up work: Sunday,

November 13, 1-4 pm OR

Monday, November 14, 11-5pm

**Featured Artists**

SEPTEMBER

September 1 - September 7  
Harry L. Taplin & Heidi Jackson  
Brush, Camera, Landscape  
Reception: Fri., Sept. 1, 7-9 pm

September 8 - September 14  
Linda Jo Nielsen - Oils and Pastel,  
When Spring Begins  
Reception: Sat., Sept. 10, 7- 9 pm

September 15 -September 21  
James Carew Photography  
Reception: Sun., Sept. 18, 2-5 pm

September 22 - September 28  
Susan Kneeland - One Wall of  
Reality  
Reception: Sat., Sept. 24, 7-9 pm

September 29 - October 5  
Patricia Gordon -Oils and Pastels,  
Quiet Places, Peaceful Spaces  
Reception: Sun., Oct. 2, 3-5 pm

OCTOBER

October 6 - October 12  
Audrey Bechler -Acrylics and  
Watercolors  
Reception: TBA

October 13 - October 26  
Bob Currier -Fire Photography:  
More From My Archives  
Reception: Sat., Oct. 15th 5-8 pm

October 27 - November 2  
Marjorie Recke & Karen Baker  
Reception: Sun.,October 30, 2-5 pm

**Powow River Poets**



**Powow River Poets 7:30 PM**  
*Laura Coombs Hills Gallery*

**September 21:**  
Featuring Readings by:  
Michael Ferbes & Carlos Reyes  
**October 19**  
**November 16**

**\* Please note that monthly readings of Powow River Poets are now under the direction of Michael Cantor.**

**Show Entry Reminders:**

**Maximum Size:**

**40 wide x 60 tall**

**NO Wet Paintings!**

**Screw-eyes & wire required.**

**No spring clips or saw teeth.**

**WORK THAT DOES NOT COMPLY WILL NOT BE ACCEPTED!**

# NAA Classes and Workshops

## Beginning Watercolor with Bill Duke

How do I start? Never tried watercolor painting before? Let Bill Duke help you get started and show you how mistakes can be corrected. Learn which papers, brushes and paints are the best to start with; learn wet-in-wet and dry brush techniques, basic composition and palette choices; learn how other artists accomplish those interesting effects; and come home with your own paintings ready to frame! A list of materials to bring to the first class will be provided. Saturdays, 1:30 - 5pm  
Starting date: Sept. 10 for 6 weeks  
Cost: \$120 members/\$125 non

## Watercolor Works with Bill Duke

The next step: for those who have worked with watercolor before, feel comfortable with the basics, and want to move on to try some new techniques. Bill Duke will help you move forward from your present skill level to surprising and very gratifying results! Each class will be structured around a project to learn a specific technique, but Bill will also provide individual assistance and answers to all your watercolor painting questions. A list of materials to bring to the first class will be provided. Saturdays, 9 am-1 pm  
Starting date: Sept. 10 for 6 weeks  
Cost: \$120 members/\$125 non

## Beginning to Intermediate Oil Painting

Instructor: JC Airoidi  
Fridays: 10 am - 12:30 pm  
Starting date: TBA for 6 weeks  
Cost: \$135 members/\$140 non  
Fun, relaxing and informative class, explore the nature of oil painting materials and the many ways to use this flexible media. Practice using the medium and explore the basic elements of building a successful picture. Basic drawing skills will be helpful. \*materials list at NAA.

## Tuscany Painting Adventure

With Kevin Shea  
September 23-- October 8, 2005  
Paint amidst the timeless wonder and beauty of Tuscany and capture the scenic and historic landscape in warm Tuscany light. Beautiful accommodations, wonderful cuisine. Complete package adventure and painting schedule. Call NAA for more info.

## Painting/ Bold and Free

Instructor: Edith Heyck  
Where realistic painting draws inspiration from the outside world, Edith's artwork is inspired by emotions and inner feelings. With years of experience as a professional artist, teacher and graphic designer, Edith combines her passionate approach to painting with teaching the fundamental elements of design. Start Date: TBA  
Cost: \$160 members/\$165 non

## Figure Sculpture Open Studio

Instructor: M. Coon  
Thursday evenings beginning  
September 29th : 7- 9:30 pm  
\$75 members/\$85 non for model fees.  
Cost for the 6 week sessions will include model, revolving work stand, armature if needed, some help will be provided for beginners. You may bring your own clay or purchase a 25 lb. bag of Terra Cotta clay for \$15. Need min. of 4 - 5 artists to provide this workshop.

## Fundamental Photography with John Raleigh

This course is designed for anyone who would like to experiment with photography by starting from scratch and rethinking what makes good photographic images.  
Six, 2 hour sessions.  
Starting date: TBA  
Cost: Cost: \$120 members \$150 non

## NEW -Wheat Weaving

Instructor: Roberta Horseman  
Wheat weaving is a cross-cultural art form dating back 5000 years. The history is deeply rooted in richness and ceremony celebrating the harvest fertility and rebirth. In this course you will weave a heart shape house blessing using wheat and twine. Learn the basics of basket weaving while learning this ancient art. Bring Scissors, Ruler and Hand towel to first day of class. Starting date: TBA

## Acrylic Painting for All

Instructor: Sheri Kennedy  
Have fun with acrylics. Core techniques and principles covered to introduce beginners and refresh experienced painters. Emphasis on individual projects. Each class includes creative refresher break.  
Starting date: TBA  
Cost: \$120 members/\$125 non

## Beginning to Intermediate Pastel

Instructor: Sharon Morley  
Learn the basics of pastels in this 6 week session. Thursdays, Sept. 29-Nov. 3rd. 7- 9 pm.  
Material list available at NAA .  
Cost: \$120 members/\$125 non  
Limited to 5 students

## Figure Drawing with live Model with Gordon Przybyla.

No instruction  
Wednesdays: 7-9:30 pm  
Cost: \$6 members/\$8 non

## Classes (continued)

### CHILDREN'S DRAWING & PAINTING

with Beverly A. Mitchell Wednesdays  
4:00 to 5:30 . Children ages 7 through  
14 years. Learn new ways of seeing  
which will enhance drawing abilities.

"If you can see it -you can draw  
it."Concentration on color and design  
using watercolor. Personal one-on -one  
instruction with lots of encouragement  
for self expression.

Cost for six week course: \$95.00

All supplies included (one make-up  
class is offered) To learn more about  
the teacher check out:

(www.beverlyamitchell.com)

email Beverly with any questions.



## Of Interest

### First Annual Newburyport Artisans Open Studio weekend

Will be held on October 8th & 9th. This  
is an opportunity for you to open your  
art studio/home to the public to exhibit  
and sell your work. For artists without  
home studios space, the Belleville  
Church will be available (Saturday  
only) Applications are available at the  
NAA. Call for more details.

## Gift Shop

**ATTENTION NAA GIFT SHOP  
ARTISTS...** All work currently on  
display in the NAA Gift Shop will  
need to be picked up by **Monday,  
September 19th.**

Moving forward, Gift Shop items will  
now be juried by Committee.

Artists can submit 3 - 5 pieces for  
review begining Sept. 26, 2005.  
Please call the gallery with any  
questions. **978.465.8769**

## Interest Groups

Abstract & Experimental  
Painters

2nd Tuesday of the month,  
7-9 pm Contact: Edith Heyck,  
978-462-9027

Photography Interest Group

2nd Monday of the Month,  
7:15 - 9 pm Contact: Jay  
McCarthy, 978-499-9009

Printmaking Group

3rd Tuesday of the month  
Contact: Susan Jaworski-Stranc  
email:  
stranc@applecidypress.net

Wednesday Morning

Plein Air Group

Meets 10:30 am

Call Johanna Hammond:

978-388-3230

Powow River Poets

Laura Coombs Hills Gallery.

Wednesdays at 7:30 pm

September 21

October 19

November 16

Contact: Rhina Espaillet,

978-462-9144

email: [espmosk@verizon.net](mailto:espmosk@verizon.net).

## Business Partner Info

See the only complete Robert's  
Snowflake Collection at Child at  
Heart Gallery, 48 Inn Street,  
Newburyport between Sept. 1 and  
Oct. 28. These 240 original art  
pieces will be auctioned on ebay  
Nov. 6 - Dec.11 to benefit Dana  
Farber. RSVP for artists reception  
held on Saturday, Oct. 8, 4:30 -  
7pm. (978.462.5554 or  
[www.ChildatHeartGallery.com](http://www.ChildatHeartGallery.com))

## In Memorium

Sculptor **James Trumbull McClellan**  
of Ipswich, MA, died in his sleep at  
age 95 on August 1, 2005. For

many years his 12 foot wide double  
mahogany doors in relief graced the  
Gloucester, MA, Sawyer Free Library  
main and children entrances.

Poseidon riding his chariot and his  
son Triton blowing his conch shell  
may today be viewed at Gloucester  
Cape Ann Historical Museum in the  
Permanent Collection with other of  
McClellan work alongside that of  
Gloucester sculptors George  
Demetrios, Walker Hancock, and  
Paul Manship with whom McClellan  
apprenticed in the 1930s.

An Ipswich resident since 1947, by  
the mid 1960s and until fall 2004  
McClellan was sculpting full time on  
commission from his self built studio  
in the loft of the huge barn.

McClellan's subjects included people,  
mermaids, dragons, griffons, phoenix-  
es, sea monsters, seahorses, birds of  
prey, lions, Norse and Greek mytho-  
logical figures, and his warriors, the  
signs and animals of the zodiac, and  
all manner of birds, ungulates,  
amphibians, fish, insects.

As organ pipe decorations carved for  
C. B. Fisk, Inc., The Noack Organ  
Company, and The Andover Organ  
Company, his work may also be  
found in churches in Washington  
state, Virginia, New York,  
Connecticut, and Massachusetts,  
including Boston Old West Church  
and St. Stephen Church. Twice win-  
ner of the Prix de Rome Competition,  
McClellan exhibited his sculpture  
across Boston and its North Shore,  
including most recently the  
Newburyport Art Association and  
The Copley Society of Art,  
Philadelphia, New York City, and  
Loveland, CO's Sculpture in the Park.

Contributions in McClellan's name  
may be made to the Cape Ann  
Historical Museum [[www.capeann-  
historicalmuseum.org](http://www.capeann-historicalmuseum.org)].